



## Powerful Proven Distributed Data Grids for Server Farms, HPC, and Cloud Computing

### Overview

Today's applications need fast access to data for maximum performance. At the same time, the need to quickly analyze data has never been higher. Distributed data grids combine distributed caching with powerful analysis and management tools to give you a complete solution for managing fast-changing data in a server farm, compute grid, or in the cloud. ScaleOut Software's suite of software products eliminates scalability bottlenecks by storing fast-changing data in a memory-based distributed cache spanning several servers, enabling scalable, highly available access by client systems. Powerful APIs make it easy to access, query, and analyze grid-based data, and industry-leading management tools ensure fast deployment and low management costs. With its multi-platform and multi-language support, ScaleOut Software offers the industry's fastest, easiest to use, and most cost-effective data grid solutions for financial services, e-commerce, and other mission-critical applications.

### ScaleOut StateServer®

#### INDUSTRY LEADING PERFORMANCE AND EASE OF USE

Our flagship product gives you production-proven performance, combined with the industry's easiest to use and most cost-effective distributed data grid. ScaleOut StateServer boosts your application's performance and scalability by storing fast-changing data using software-based, in-memory, distributed caching. This product offloads your back-end database server to dramatically increase access performance and scalability, while lowering infrastructure costs. Patented storage technology enables fast, grid-wide access to all stored data and ensures high availability during server outages or planned downtime.

### ScaleOut Grid Computing Edition™

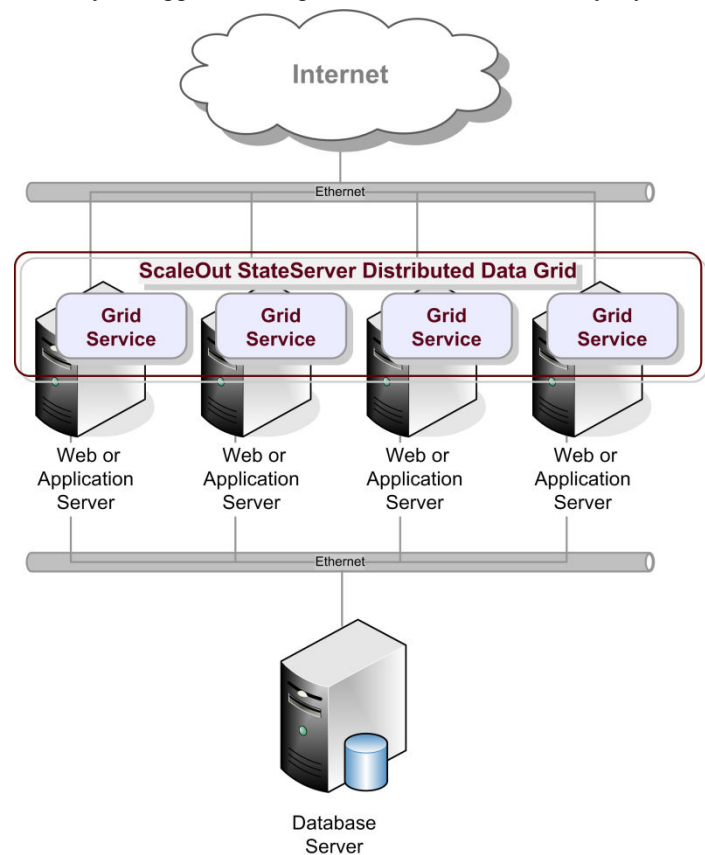
#### FAST TIME TO INSIGHT

ScaleOut StateServer Grid Computing Edition adds LINQ query, parallel data analysis and enterprise management to ScaleOut StateServer's industry-leading distributed cache. Your applications can easily analyze grid-based data by executing intuitive, user-defined, "map/reduce" methods in parallel on data selected by the parallel query engine. Data motion is eliminated, offloading your network and dramatically speeding up performance. ScaleOut StateServer Grid Computing Edition transparently combines the power of multiple servers, processors, and cores to deliver fast, scalable data analysis that's easy to develop and powerful to use.

### ScaleOut SessionServer™

#### TRANSPARENT SESSION-STATE STORAGE

ScaleOut SessionServer for ASP.NET lowers infrastructure costs, increases performance, and offloads your back-end storage server by transparently hosting ASP.NET session-state directly on the Web server farm or on a dedicated caching farm. Incorporating ScaleOut StateServer's distributed, in-memory caching technology, ScaleOut SessionServer scales performance and storage capacity as the farm grows, while protecting stored data and maintaining high availability. This enables mission-critical, Web applications to meet growing business demands and deliver fast response times to their clients.

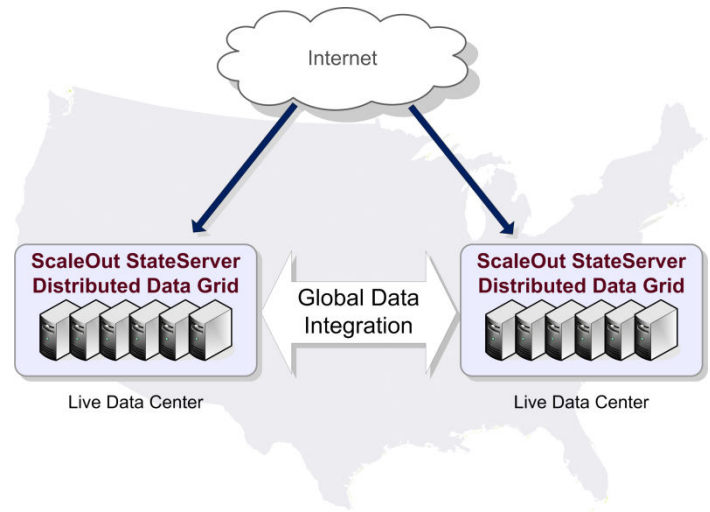


## ScaleOut GeoServer®

### SCALABLE GLOBAL REPLICATION & ACCESS

Using ScaleOut GeoServer, you can transparently extend ScaleOut StateServer's distributed data grid across multiple geographically distributed data centers to enable global accessibility and to protect against loss of data due to a site-wide outage. ScaleOut GeoServer's scalable and highly available mechanisms for data replication ensure fast data transfers between sites.

With version 5.0, ScaleOut GeoServer adds global data integration to enable multiple remote distributed data grids to be accessed as a single logical grid. Requests to any data grid will transparently retrieve data from other grid locations if not available locally. Likewise, updates to data will be automatically visible to all connected grids.

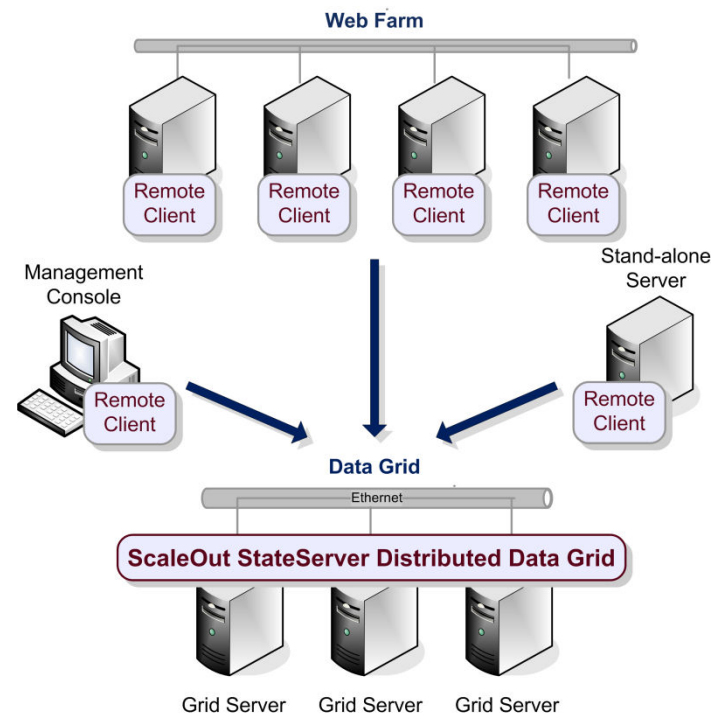


## ScaleOut Remote Client™

### SCALABLE CLIENT ACCESS

ScaleOut Remote Client adds a new level of flexibility to your deployment of ScaleOut StateServer's distributed data grid. In many situations, it is more convenient to deploy a ScaleOut distributed data grid on its own dedicated server farm instead of co-locating it on your Web or application server farm. With the Remote Client option, client applications can run on a different farm or on other networked computers and remotely access the distributed data grid.

Remote access gives you new options for maximizing application performance using distributed caching. For example, the diagram on the right shows the use of ScaleOut Remote Client enabling a Web farm, stand-alone server, and management console for access to a distributed data grid hosted on a remote server farm.

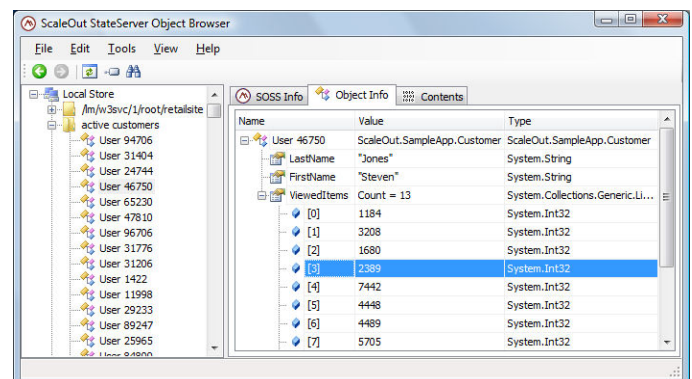


## ScaleOut Management Pack™

### POWERFUL AND EASY TO USE

The ScaleOut Management Pack adds enterprise-level features to extend your ability to manage, analyze, and protect data stored in ScaleOut StateServer's distributed data grid. The Management Pack contains two components: an object browser for visually browsing and managing objects stored in the distributed data grid and a parallel backup and restore feature for archiving its contents in the file system.

You can use the Management Pack's ability to increase both the grid's visibility and manageability to optimize your applications. For example, ecommerce applications can use the object browser to inspect customer shopping carts in real-time for sales tracking and inventory management. Likewise, financial applications can use the backup and restore utility take snapshots of data for later analysis of market trends.



**SCALEOUT SOFTWARE**

Tel: (503) 643-3422 | Web: [www.scaleoutsoftware.com](http://www.scaleoutsoftware.com)